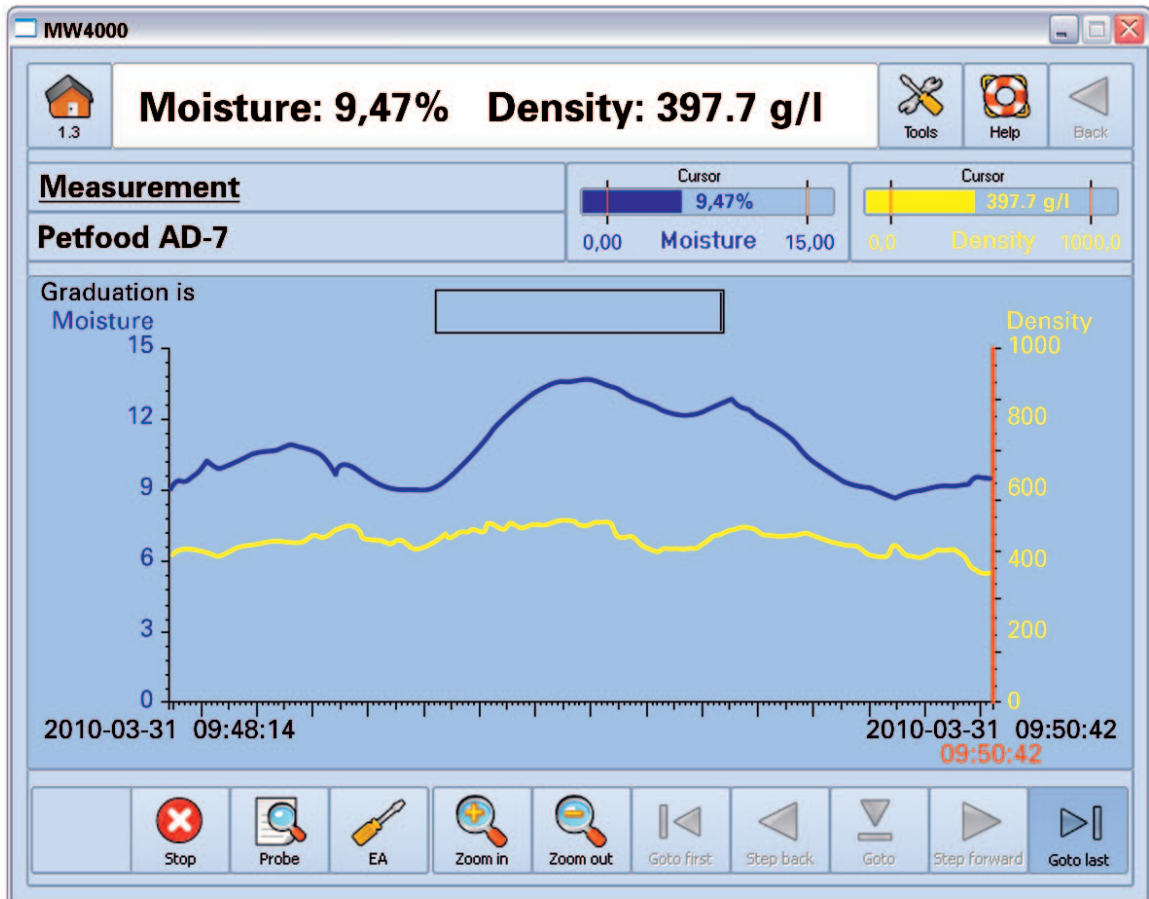


## Display, Analyze, Report



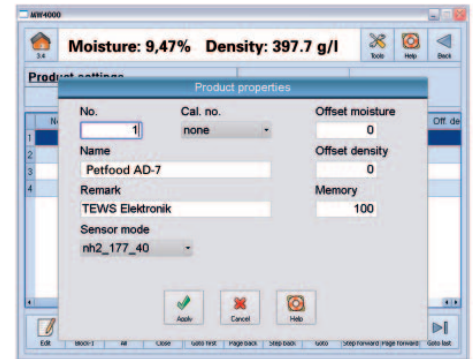
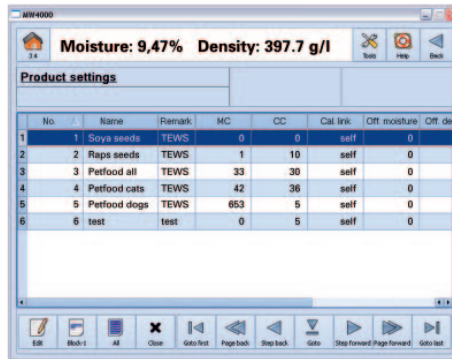
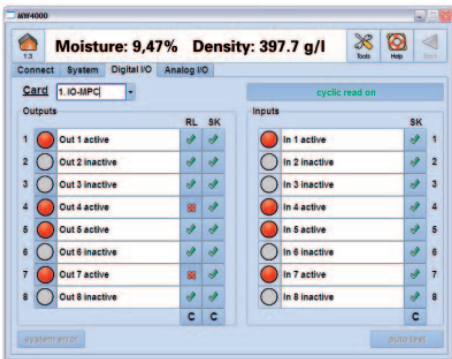
TEWS Moisture View © software has a single user interface to connect to all the measuring instruments in the new „Blueline®“ model range. Its many operational, configuration and device management functions are built on 19 years of TEWS Elektronik experience.

### Laboratory data

The laboratory version of TEWS Moisture View © has extended spreadsheet functions for the display of measurement results. It supports USB memory sticks and local networks for data exchange. All standard printers are also supported to enable printing straight from the screen.

### Process data display

TEWS Moisture View © features an extended set of display options for measuring the moisture in process systems. The measuring system or a PC attached to it can be used to graphically display moisture, density and temperature against time. The software can also be run as an easy-to-use means of configuring the analog and digital interfaces.



## TEWS MOISTURE VIEW ©:

- Simple and comprehensible icons for easy operation
- Statistics and diagram functions for data analysis and display
- User administration includes log-in function and log files
- Memory stores personal setup and user profiles
- Context-sensitive help
- Multiple language selection

### PC and laptop

If your measuring instrument has no monitor for operation and sensor value display, simply install TEWS Moisture View © software on a personal or laptop computer running the LINUX or Microsoft Windows® operating systems. The computer will communicate with the measuring instrument via Ethernet either in a network or via a PC link cable.

### TEWS Moisture View Lite ©

Use TMVL © for data analysis, data storage and configuration of MW 11XX-series portable moisture meters and laboratory measuring instruments. The software controls a reduced set of functions and is included in the package of these systems.